



① ZT350-GK通用说明书*1

3040301-041700



② ZT350-GK随车工具*1

1274300-087000



③ ZT350胶体电池充电器*1

1184300-026000



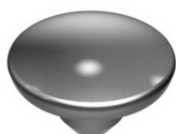
④ 纽扣电池（飞狮CR1225）*1

1184200-182000



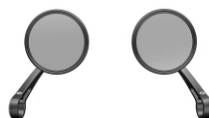
⑤ ZONTES机油
(SN5W-40/1L)*2

3070100-012100



⑥ ZT250-S M8螺栓装饰扣
(深灰哑光)*4

4044102-002051



⑦ KD150-G1后视镜
(加重版)总成*1

1190100-485000



⑧ ZT184MP精滤密封组件
(纸盒包装)*1

4134300-001000



⑨ ZT350-GK离合线支架*1

1274300-098000



⑩ GB6177. 1M6 (环保彩)*2

1250303-010093



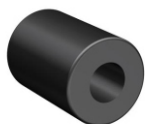
⑪ ZT250-S后视镜安装孔胶塞*2

1244100-095000



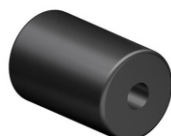
⑫ ZT350-GK护手杆*2

1134300-007000



⑬ ZT350-GK方向把橡胶块*2

1244300-041000



⑭ ZT350-GK护手杆配重块*2

1134300-010000



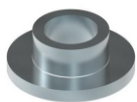
⑮ 后广告牌 (ZONTES升仕)*1

1210201-362000



⑯ GB97.1 φ8 (环保彩)*1

1250503-021093



⑰ 翻边衬套
 $\phi 6.2 \times \phi 8.4 \times 3.5 + \phi 14 \times 1.5 * 2$
1274100-057095



⑱ 非标螺栓 $M6 \times 16$
(304不锈钢)*4
1251100-102000



⑲ GB70.1内六角螺栓 $M8 \times 16$
(环保彩锌)*1
1250205-040095



⑳ 翻边衬套缓冲胶
($\phi 8.5 \times \phi 14 \times 1$)*2
1244100-052000