

① ZT310-R说明书*1
3040301-015800



② ZT250-S左后视镜*1
1194100-001000



③ ZT250-S右后视镜*1
1194100-002000



④ ZT250-SM8螺栓装饰扣*4
1224100-025000



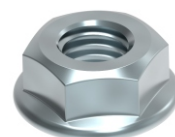
⑤ ZT310-R方向把压块（自制）*1
1134200-005000



⑥ 外径 $\Phi 50 \times 38$ 圆柱精滤器*1
1050851-006000



⑦ SN 5W-40机油总成*2
3070100-012100



⑧ GB6177.1M8（环保彩）*1
1250303-011093



⑨ GB5789M8 $\times 30$
（环保彩）*1
1250105-149093



⑩ GB5789M8 $\times 35$
（环保彩）*2
1250105-143093



⑪ 内六角头M6 $\times 30$ 螺栓
（手把开关打紧螺栓）*4
1250205-031091



⑫ 十字球头M5 $\times 30$
（右手把开关定位螺栓）*1
1251100-219000



⑬ ZT250-R平衡块委外总成*1
1134100-029000



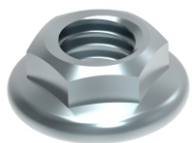
⑭ 310PKE钥匙纽扣电池*1
1184200-040000



⑮ 钥匙*2



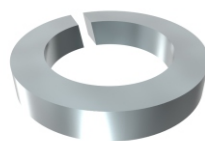
⑯ 非标螺栓M6 $\times 12$
（304不锈钢）*2
1251100-101000



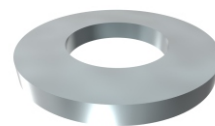
⑰ GB6177.1M6 (环保彩) *2
1250303-010093



⑱ 后广告牌 (ZONTES升仕) *1
1210201-362000



⑲ GB93 ϕ 8 (环保彩) *3
1250501-007093



⑳ GB97.1 ϕ 8 (环保彩) *3
1250503-021093



㉑ ZT250-S随车工具*1
1274100-053000