

① ZT250-R说明书 (PKE) \*1  
3040301-021300



② ZT250-S左后视镜\*1  
1194100-001000



③ ZT250-S右后视镜\*1  
1194100-002000



④ ZT250-SM8螺栓装饰扣\*4  
1224100-025000



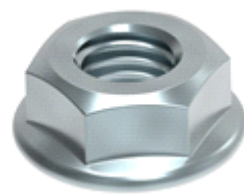
⑤ ZT310-R方向把压块 (自制) \*1  
1134200-005000



⑥ ZT250-S售后精滤器\*1  
2020100-012000



⑦ SN 5W-40机油总成\*2  
3070100-012100



⑧ GB6177.1M6 (环保彩) \*2  
1250303-010093



⑨ 非标螺栓M6×12  
(304不锈钢) \*6  
1251100-101000



⑩ 非标螺栓M6×16  
(304不锈钢) \*3  
1251100-102000



⑪ 内六角头M6×30螺栓  
(手把开关打紧螺栓) \*4  
1250205-031091



⑫ 十字球头M5×30  
(右手把开关定位螺栓) \*1  
1251100-219000



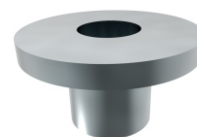
⑬ 后广告牌 (ZONTES升仕) \*1  
1210201-362000



⑭ 310PKE钥匙钮扣电池\*1  
1184200-040000



⑮ 钥匙\*2



⑯ ZT250-S翻边衬套\*3  
1274100-007000



⑰ 内六角螺母M8  
(环保彩锌)\*2  
1251300-058093



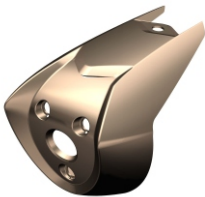
⑱ 非标螺栓M10×1.5×20  
(达克罗)\*1  
1251100-082093



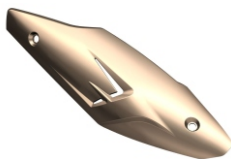
⑲ 0级阻燃扎带\*1  
(黑色3.6×295)  
1224100-037000



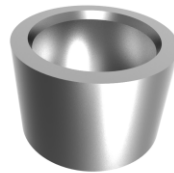
⑳ ZT250-S发动机  
排气口密封垫\*1  
1070100-133000



㉑ ZT250-S消声器尾罩\*1  
1224100-029000



㉒ ZT250-S消声器防烫板\*1  
1224100-028000



㉓ ZT250-S消声器防烫板衬套\*6  
1274100-018000



㉔ ZT250-S消声器法兰\*1  
1020241-094000



㉕ ZT250-R平衡块委外总成\*1  
1134100-029000



㉖ ZT250-S随车工具\*1  
1274100-053000



㉗ 下导流罩总成