



Unpacking new motorcycle for ZONTES and manual
for installing accessories with motorcycle

703F

1.Preparation work

Tool preparation

- Scissors/art knife (use to unpack peaches and foam)
- Torque wrench hair installation/Hex Key Wrench Set (used to assemble parts)
- Jack or bracked (if necessary)
- Gloves (anti-spat)
- Air pressure meter (check tire pressure)
- Model description (with the motorcycle, please read it in advance)

Venue requirement

- Choose a flat and empty site to avoid bumps.
- Well lighted so you can check the details with your convenience.

Personnel collaboration

It is recommended that 2 people cooperate to avoid damaging the motorcycle.

2.Unpacking steps

check the outer packaging of apricot

- Confirm that the outer packaging is not seriously damaged, soaked for squeezed.
- Take photos to record the packaging status (as a proof for any problem may be found in the future)

Check the outer packaging of apricot

- Remove the iron frame and tie of the fixed motorcycle, and remove the external protective foam.
- Use a wrench to remove the mental bending beacket that fixes the car body. If necessary, one person will assist in stabilizing the center of gravity of the motorcycle to avoid dumping (pay attention to protect the paint surface)

Carry out the motorcycle

- Two people work together to lift up the vehicle (or use the jack/bracked assistance)
- Place it on a stable ground to ensure that there is no tilt.

3.Vehicle inspection

Appearance inspection

- Whether the motorcycle paint, exhaust pipe and wheel hub are scratched, dented or rusted.
- Plastic part(fenders, instruments), whether they are intact and whether the paint is intact and undamaged.

Inspection of the ke parts

- Tires: check whether the tire pressure meets the standard (reference manual)
- Brake system: pinck the brake handle, step on the brake pedal (Knight Year), and confirm that the rebound is normal and there is no abnormal sound.
- Engine: check whether there is oil leakage and liquid seepage.
- Chain/transmission belt: check the elasticity and lubrication status

Confirm with the vehicle attachment

- Keys, instructions, kits, chargers(gifted only if the displacement is greater than 250CC), whether it is complete.
- Check whether the frame number, engine number and vehicle nameplate information are consistent with the car purchase documents.

4.First start/vehicle inspection

Turn on the power

- The battery is connected to the positive and negative poles (pay attention to insulation protection). First connect the positive pole (red) and then connect the negative pole (black) to avoid short circuit sparks.

Test of the starting

- Short press to turn on or switch the vehicle key to turn on.
(Please do the following operations when idling)
- Check whether the fault lights on the dashboard are on (some fault lights need to be removed after the vehicle has been driven for a period of time)
- Ignite in neutral and observe whether the idle speed is stable (fuel vehicles need to be preheated for 1-2 minutes)

Function debugging

- Adjust the clutch/brake handle stroke to a comfortable position.
- Check whether the left and right handlebar buttons (power on button, horn button, off ignition switch or other buttons) are normal.
- Check whether the lights (headlights, turn signals, brake lights, overtaking lights, fog lights, hazard warning lights) are normal.
- Try to turn the accelerator and brake to confirm that there is no jam.

Operation on a trial basis

- | | |
|--|-----------------------------------|
| • Cold start engine | • Low speed short distance riding |
| • Test gear shift | • Throttle control |
| • Acceleration and braking feedback | • front and rear braking feedback |
| • front and rear suspension efficiency | • Abnormal noise |
| • Restart after heating up the vehicle | • Idling |
| • Steer evenly | • Engine oil may leak |
| • Radiator electric fan operation | |

Fuel and power check

- Fuel motorcycle: add specified gasoline to the recommended oil

5.Documents and after-sale service

Save date

- Keep the COC certificate and model description
- Keep the contacts of the local dealer for after sales consultation

Reminder for the first maintenance

- Go back to the dealer for maintenance according to the instructions

6.Installing of the accessories

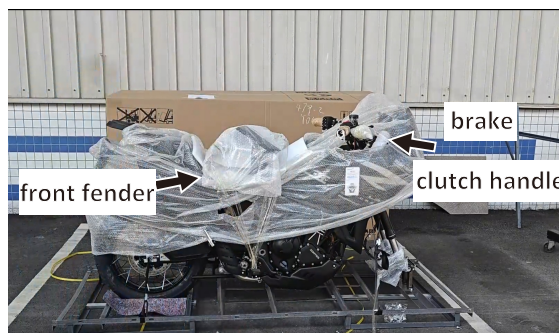
- Preparing tools: gantry crane, scissors, T25 plum blossom hexagon wrench, No 8、No12 sleeve, No 5、No 6、No 8、No 17 hexagon socket、wrench, No 10、No 12 open the hand or prepare it as needed.



- Open the annual vehicle package and be careful not to damage the body and or anything. and take out the accessory box and front tires from the package



- Use scissors to remove the package that fixes the front fender, remove the handlebar and packaging on the brake and clutch handle.



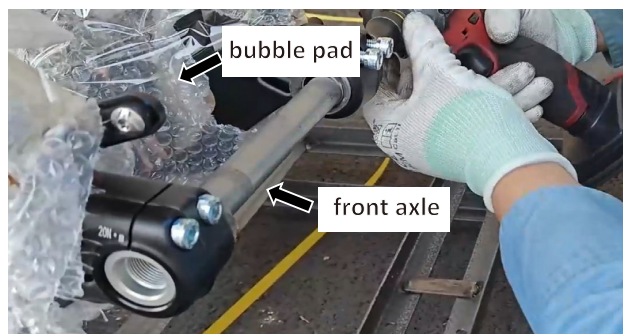
- Pass the rope through the hole under the pad and lift it in the same position. Put some bubble bags in front to prevent scratches, and put the rope separately. One the end is hanging on the dragon gate. Hang it up and tighten the rope to lift the vehicle.



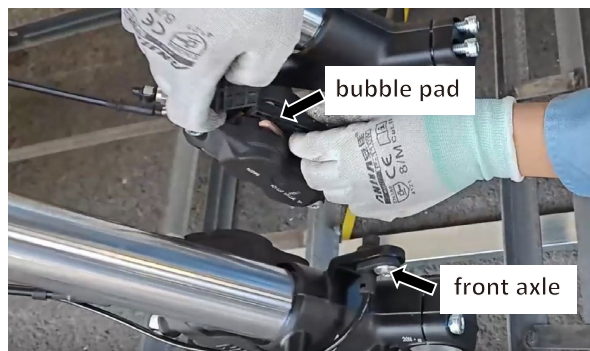
- Note: make sure that the rope is tight, untie the village belts on both sides and use the No. 12 sleeve to remove the bracket and pressure plate.



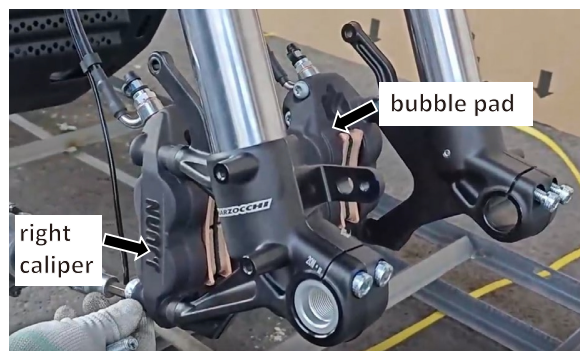
- Use the No. 17 Allen wrench to remove the front axle and use scissors to remove it. Open the bubble pad.



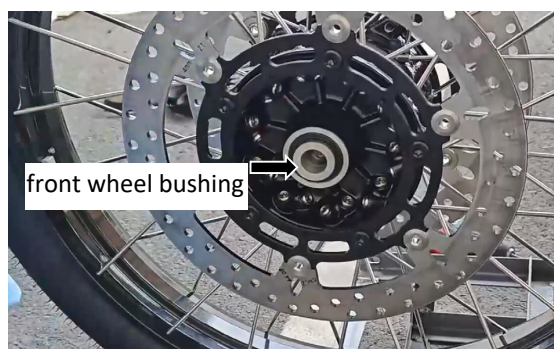
- Note: the front brake is not allowed in this process.
- Remove the plastic plate inside the left and right brake calipers, and use the T 25 plum blossom inner six remove the wheel speed sensor with the angle wrench.



- Use the No. 8 Allen wrench to remove the fixing screws of the left and right brake calipers, remove the left and right brake calipers.



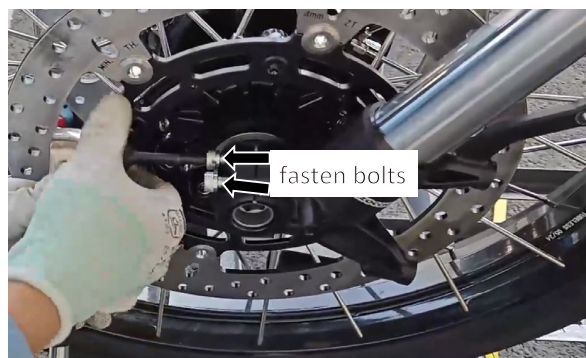
- Note: the two front axle sleeves are not divided into left and right
- Put the two front cylinders in the corresponding position of the wheel.



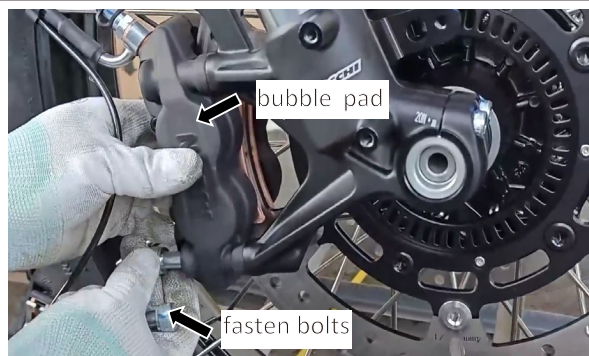
- After lifting the vehicle to the appropriate height, the front wheel axle is aimed at the front shock absorber. After installing the hole, put it into the front wheel axle and then use the No. 17 Allen wrench. Torsion standard: 50N*M



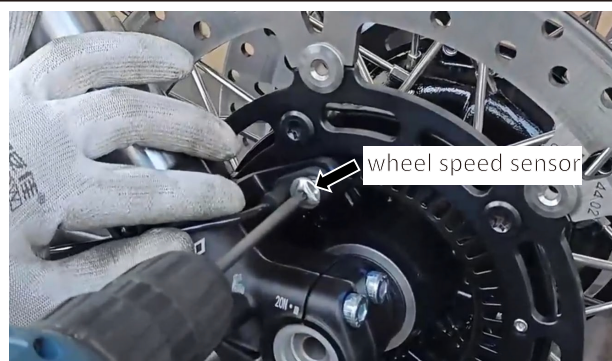
- Use the No. 6 Allen wrench to tighten the front shock absorber left and right bolts twice. Torsion standard: 20N*M



- Align the mounting hole of the right caliper and use a No. 8 Allen wrench to fasten the two bolts up and down. Torision standard: 45 N*M



- Align the mounting hole of the wheel speed sensor and use T25 Allen wrench tightens the fixing bolt. tenance standard: 10 shi 2 N*M



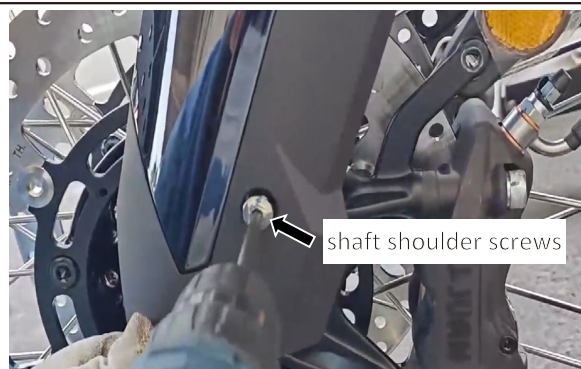
- Complete the installation of the left caliper. The operation of installing left card uranium is the same as installing right.



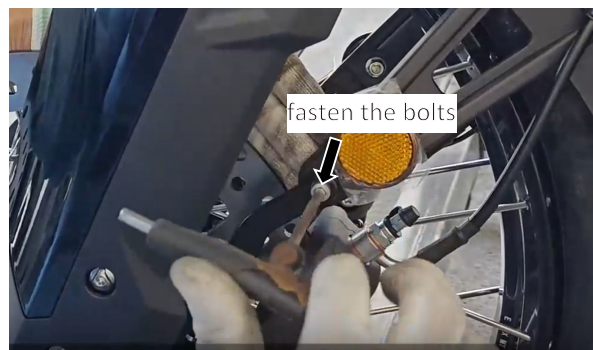
- Open the front fender packaging and push the fender in from the back to make it the empty space matches the front shock absorber and stuck the left caliper oil pipe into the fixing clamp.



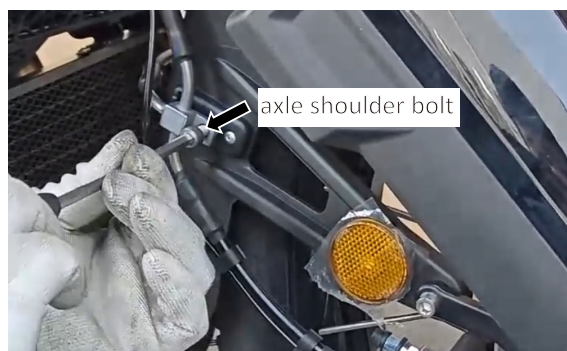
- Align the left stone installation hole of the fender, and use T25 Allen wrench tightens the left and right two inner plum blossom shaft shoulder screws left M6*16 plus $\phi 8.5 \times 5$ (304 stainless steel). torsion standard: $10 \pm 2 \text{ N} \cdot \text{M}$



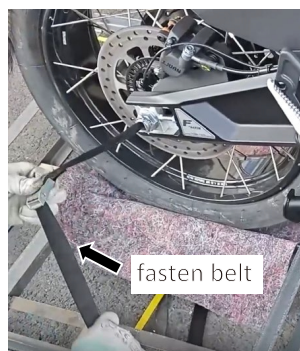
- Two square flange thread bushings M6*5- $\phi 10 \times 3$ (environmental protection color) fixed to the left and right inner sides of the front fender, so that the front fender and reduce Align the hole position of the shock installation and put one on the left and right sides. GB70.1M6*16 hexagon screw (stainless steel), use No. 5 Allen wrench to tight the bolts.



- After aligning the oil pipe bracket with the mounting hole of the front fender, put it in a GB70.1M6*16 hexagon screw (stainless steel) use No. 5 Allen wrench to fasten.



- Note: one person needs to stabilize the vehicle.
- remove the rear wheel fixing strap and confirm whether the anti-foosening opening pin is still. after confirming, scatter the gantry crane and push the whole vehicle off the shelf down.



- Use the T25 Allen wrench to remove the inner plum blossom shaft shoulder on the original vehicle. remove the decorative cover of the windshield.



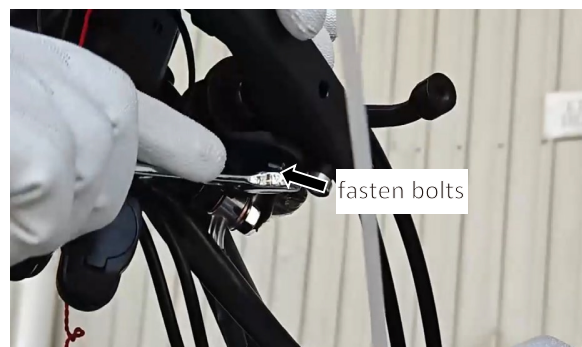
- Take out the ZT703-F windshield (II) from the accessory box, aim ZT703-F windshield (II) and the mounting hole of the windshield bracket, use the T25 Allen wrench to put the original screw back. torsion standard: $10\pm 2\text{N}\cdot\text{M}$



- Use the No. 8 sleeve to loosen the fixing of the clutch handle and the brake handle bolt, move one side of it to the white dot position and then fasten it. torsion standard: $12\text{N}\cdot\text{M}$



- Use the No. 10 opening wrench to remove the fixing nuts of the clutch handle and the bottom of the brake handle



- Put two ZT703—F hand shield transfer studs into the same hole position, use a 12 opening wrench to tighten.



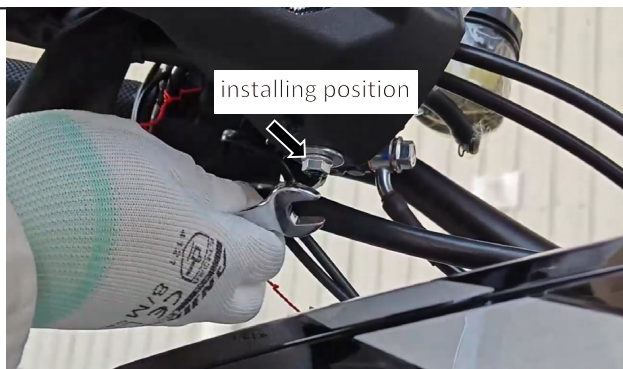
- Install the ZT703—F left turn signal hand cover assembly (MES)、ZT703—F right turn signal hand cover assembly (MES) and ZT703-F left hand balance block (210g)、ZT703-F right hand handle balance block (210g) with two inner plum blossom shaft shoulder screws M5×13—φ7×3 (304 stainless steel) part installed, use T25 Allen wrench fasten. (torsion standard: $10\pm 2\text{Nm}$)



- Align the left and right handguards with the installation hole in the direction on the left and right put a GB70.1M6×60 (stainless steel) , use No. 5 Allen wrench to fasten.



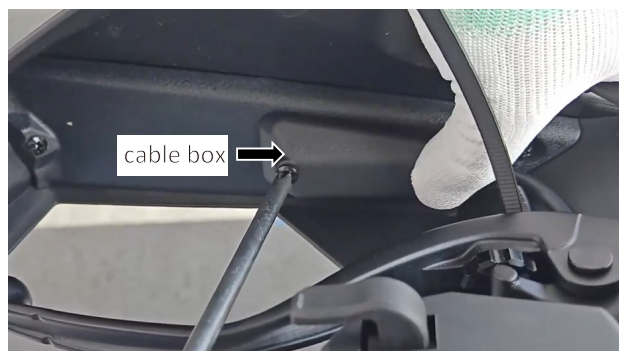
- The non standard flat pad $\phi 6.5 \times \phi 22 \times 1.5$ (environmental protection color) and GB6170M6 (environmental protection color) installed in ZT703—F on the hand cover to connect the stud in order of priority. Use No. 10 opening wrench to tighten the nut.



- Two inner plum blossom shaft shoulder screws M5×13— $\phi 7 \times 3$ (304 stainless steel) installed above the left and right handguards, using T25 Allen wrench to fasten. (torsion standard: $10 \pm 2N \cdot M$)



- Connect the front left and right turn signal harness and fix the harness connector on the line inside the buckle, turn the ZT703—F right turn signal box and the ZT703—F left install the light wire box on the handguard and alit the installation hole, and put the two non standard self tapping screws ST3.9×12 (black zinc) into the installing hole, then use the ten cross screw driver to fasten.



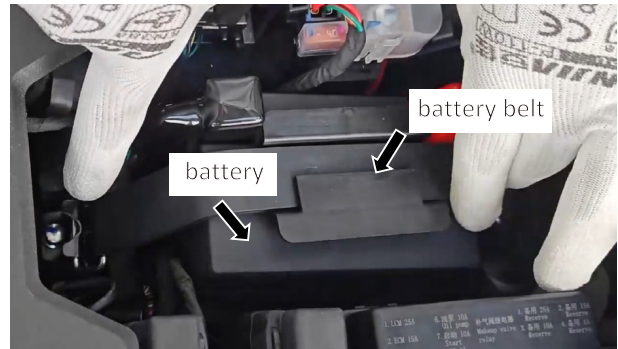
- After alignment, put a GB70.1M8× 20 (stainless steel) with elastic pads on the left and right sides, Using the No.6 wrench to fasten



- Align the left and right installation of the fender, and use T25 Allen wrench fasten the left side and the right side shaft shoulder screws M6×16+φ8.5×5(stainless steel) torsion standard:10±2N*M



- Two square flange thread bushings M6×5-φ10×3 (environmentally friendly color) fix to the right and left inner sides of the front fender, so that the front fender and reduce alim the hole position of the shock installation, and put one GB70.1M6×16 hexagon screw (stainless steel) on the left and right side, Use No.5 Allen wrench to fasten.



- After the installation, turn on the power to check whether the function of the vehicle is normal.