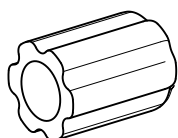


KIDEN

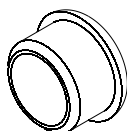
KD/ZT-C

整车展架安装指南 Guide to the installation of the exhibition rack

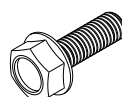
散件清单
The list of bulk parts



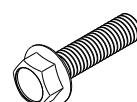
① × 4



② × 2



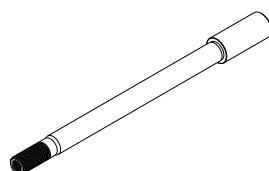
③ × 1



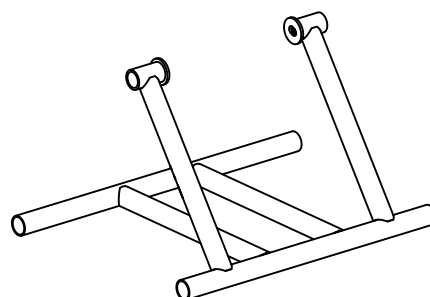
④ × 1



⑤ × 2



⑥ × 1

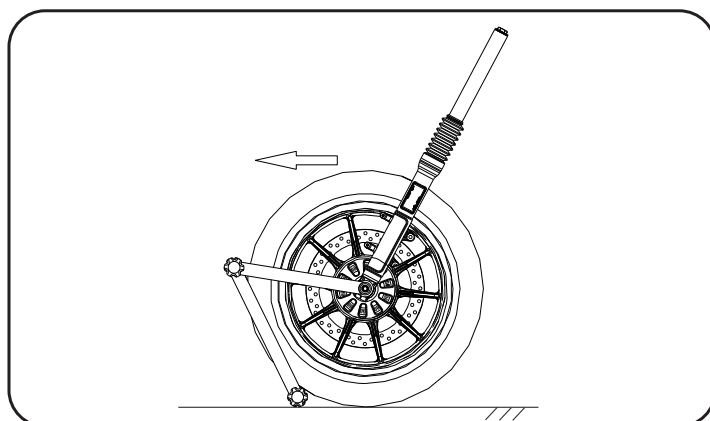
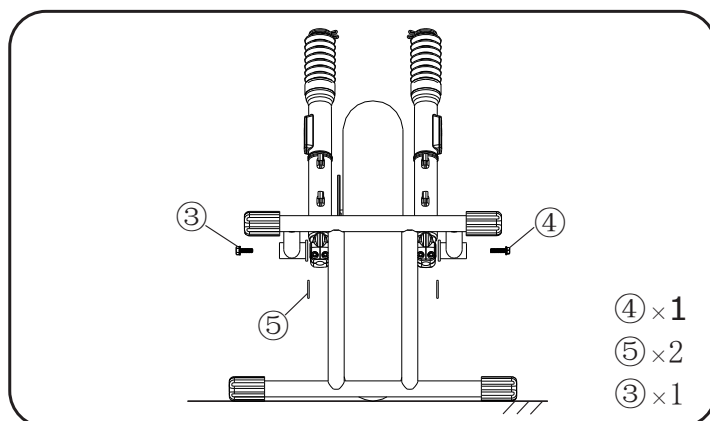
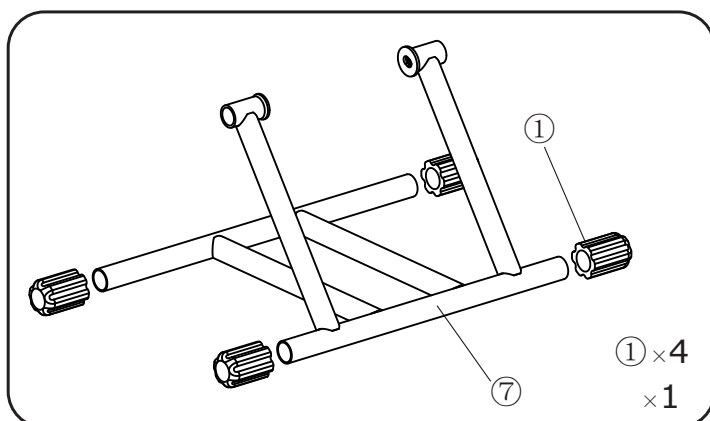
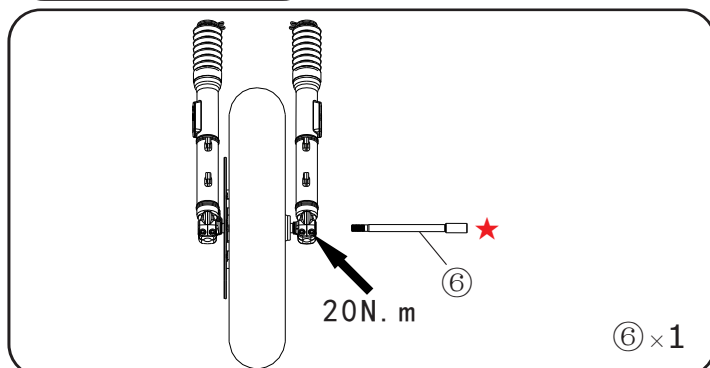


⑦ × 1

•注意 Note

- 本品为KD/ZT-C 16寸前轮系列车型专用，安装前请确认
This product is special for KD/ZT-C 16" front wheel models, please confirm before installation.
- 安装前请核对散件数目
Check the number of bulk pieces before installation.
- 安装指南仅作参考，请以实际为准
The installation guide is for reference only, please take the actual information as a guide.

安装示意图
Installation sign



● 安装提示

Installation tips

- 将车辆支撑好后使用6#内六角松开前左减震的2颗螺栓，将前轮组件托好后使用12#内六角拆下前轮轴并替换成展架轴⑥，将松开的2颗螺栓紧固好。★展示结束后务必将展览时用于支撑前轮展架专用的轴换回原车辆装配的前轮轴，否则可能会因强度不足造成安全隐患。

After supporting the vehicle, use 6 # Hexagon to loosen the front left shock absorber 2 bolts, after supporting the front wheel assembly, use 12 # Hexagon to remove the front wheel axle and replace it with the exhibition axle ⑥, fasten the loosed 2 bolts. ★After the exhibition, the axle used to support the front wheel display rack must be replaced by the axle that come with the vehicle. Otherwise, it may cause safety hazard due to lack of strength.

- 安装①胶套时确保胶套套到底部避免脱落

When installing ① sleeve, make sure that the sleeve is covered to the bottom to avoid falling off.

- 整车摆正后，先将展架长管上的两件胶套着地后再将展架对好展架轴（如图3所示），从右侧穿入螺栓③，确保胶垫⑤在展架圆垫片与前减震器之间，避免穿螺栓③以及装配后划伤减震器。用12#套筒将螺栓③顺时针锁紧，直到展架圆垫片刚开始往里变形时停止。使用同样的方法安装螺栓④。

After the vehicle is straightened, first put the two rubber sleeves on the long tube of the exhibition stand on the ground, then align the exhibition stand with the exhibition stand axle (as shown in Figure 3), insert the bolt ③ from the right side, ensure that the rubber pad ⑤ is between the round gasket of the exhibition stand and the front shock absorber, and avoid threading the bolt ③ and scratching the shock absorber after assembly. After fixing the bolt ③ with 12# sleeve, lock the bolt ③ until the round gasket of the exhibition stand starts to deform inward. Install the bolt ④ in the same way.

- 顶住展架胶套外侧面将车辆往前推让展架4件胶套着地，将螺栓③和螺栓④锁紧后将两件橡胶盖②装好。

Push the vehicle forward against the outer side of the rubber sleeve of the exhibition stand, let the four rubber sleeves of the exhibition stand land, fixing the bolt ③ and bolt ④, and then install the two rubber covers ②.