

散件清单

parts and components list



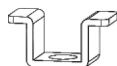
① x4



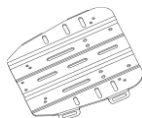
② x4



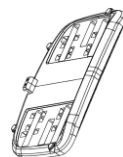
③ x4



④ x4



⑤ x1



⑥ x1



⑦ x1



⑧ x1

安装示意图

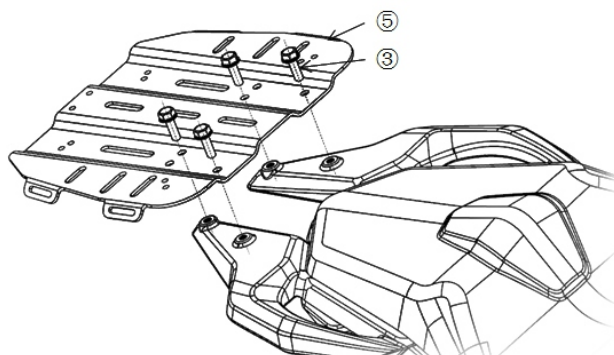
installation chart

步骤一: Step one

用四颗 M8×20 外六角螺栓将尾箱安装板固定在后扶手上;
Fix the installing plate of tail box on the rear rack with four units M8×20 outer hex bolts.
推荐工具: 10# 套筒扳手
Recommended tools: 10# socket wrench.

③ x4

⑤ x1

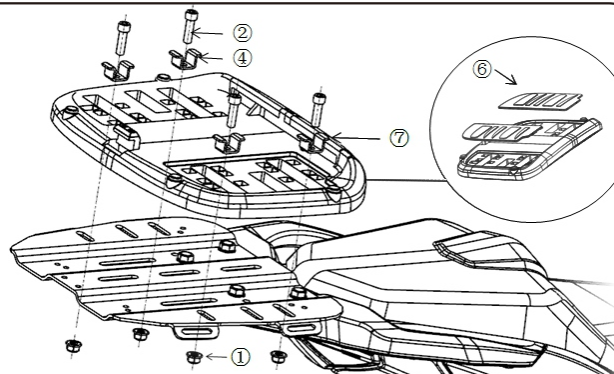


步骤二: Step two

将尾箱底板按照图示安装在尾箱安装板上, 固定好后盖上底板盖板。
Install the bottom plate of tail box on the rear installing plate according to the picture shows above and then fix the rear bottom plate of the rear cover.
推荐工具: 6# 内六角扳手, 12# 开口扳手。
Recommended tools: 6# internal hex wrench, 12# open wrench.

① x4 ④ x4

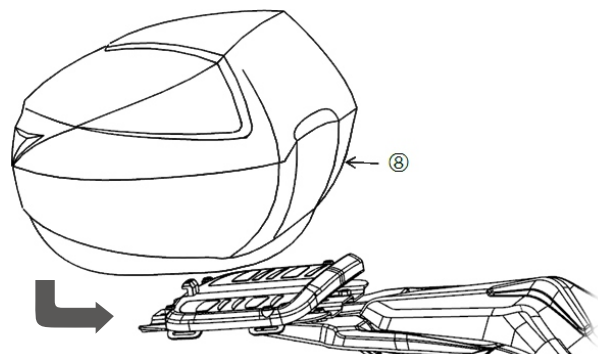
② x4 ⑥ x1 ⑦ x1



步骤三: Step three

将夏德SH39尾箱卡入底板, 完成安装。
Insert the SHAD SH39 tail box into bottom plate.

⑧ x1

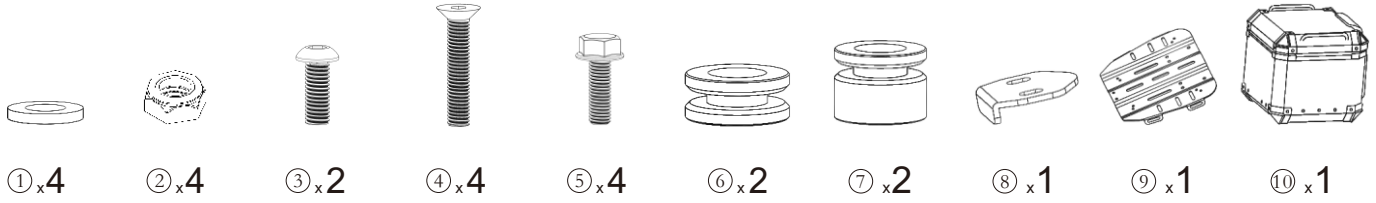


• 注意 attention

1. 安装前请仔细阅读安装指南。2、如产品与指南不符, 请以实际产品为准。
1. Please patiently read the installation instruction carefully before installation. 2.If the parts you receive are not equal to the insruction, please refer to the real parts you receive.
3. 定期检查各部件的紧固情况。
3. Check regularly the fastening condition of each part.

散件清单

parts and components list



安装示意图

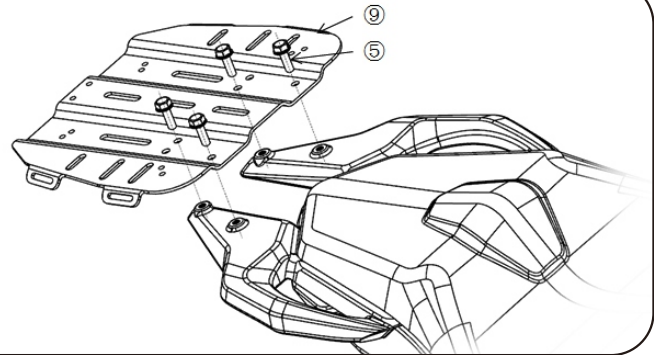
installation chart

步骤一: Step one

用四颗 M8×20 外六角螺栓将尾箱安装板固定在后扶手上;
Fix the installing plate of tail box on the rear rack with four units M8×20 outer hex bolts.
推荐工具: 12# 套筒扳手
Recommended tools: 12# socket wrench.

⑤ x4

⑨ x1

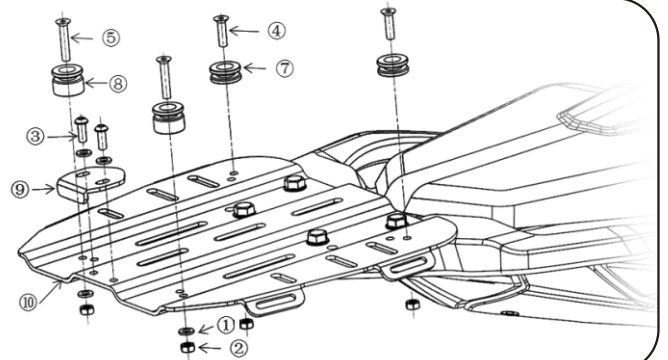


步骤二: Step two

将铝葫芦与锁扣按照图示装配在尾箱安装板上。
Install Aluminum calabash and lock button on the installing plate according to the picture shows above.
推荐工具: 4# 内六角扳手, 10# 开口扳手。
Recommended tools: 4# internal hex wrench, 10# open wrench.

① x4 ③ x2 ⑥ x2 ⑧ x1

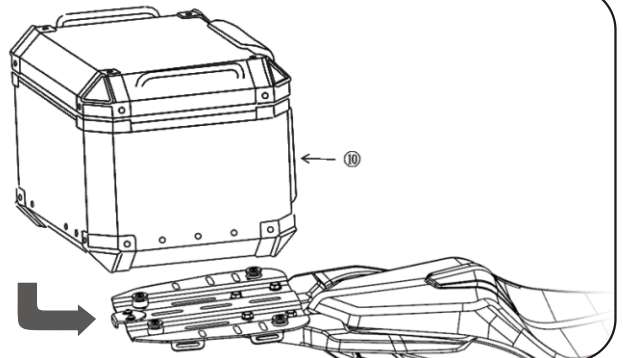
② x4 ④ x4 ⑦ x2 ⑨ x1



步骤三: Step three

将萝卜 L45 尾箱卡入底板, 完成安装。(安装尾箱前需将锁扣调整到合适位置)
Insert the LOBOO L45 tail box into the installing plate. (Adjust the lock button to a appropriate position before installing tail box.)

⑩ x1



• 注意 attention

1. 安装前请仔细阅读安装指南。2. 如产品与指南不符, 请以实际产品为准。
1. Please patiently read the installation instruction carefully before installation. 2. If the parts you receive are not equal to the insruction, please refer to the real parts you receive.
3. 定期检查各部件的紧固情况。
3. Check regularly the fastening condition of each part.